



# Lakestone 8

10385 Long Road, Lake Country



**Select your dream home with pricing starting at:**

**\$1,385,000**

---

**Lakestone 8 is the newest residential attached home project located in the heart of Lake Country's picturesque landscape.**

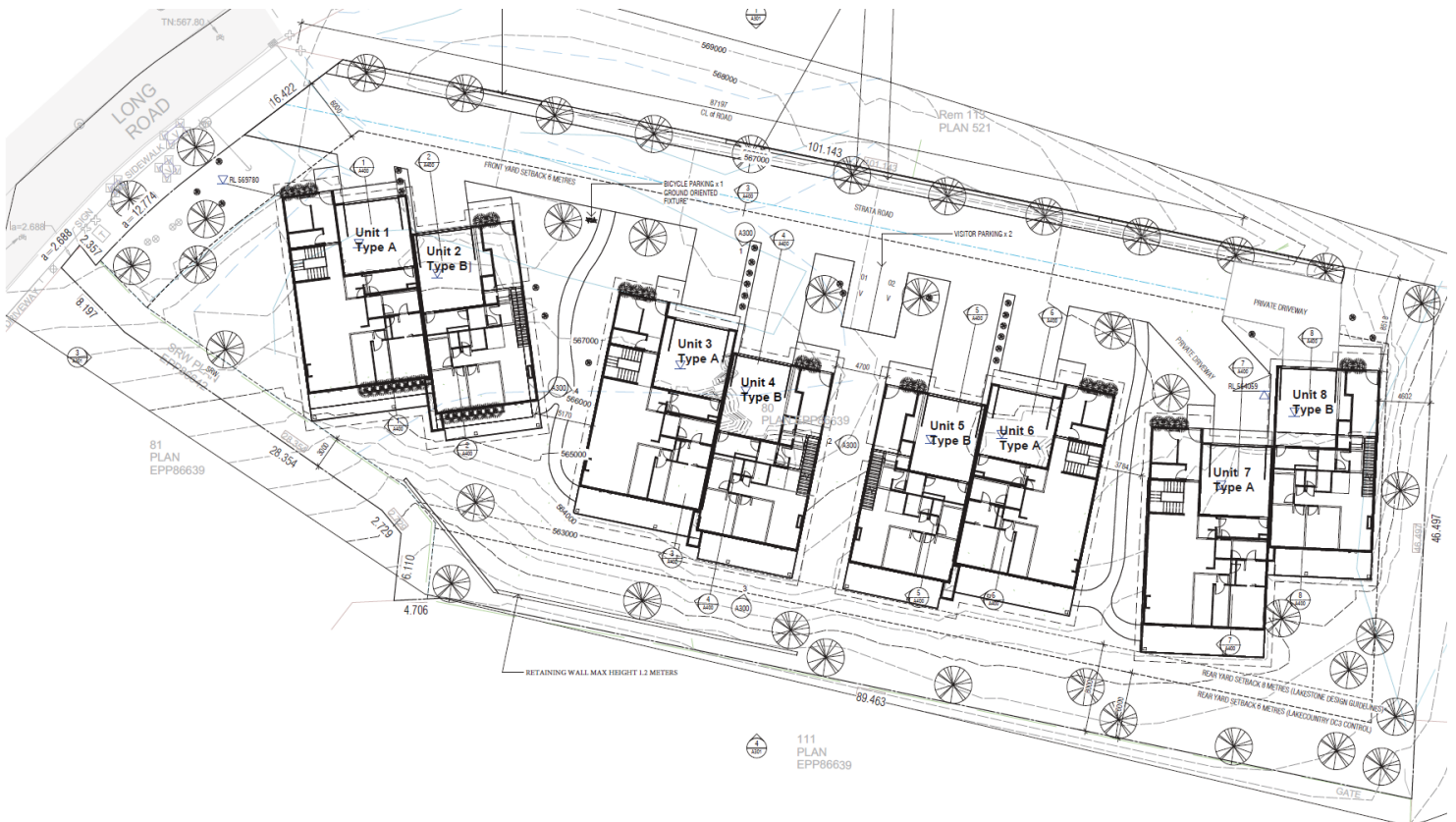
**Perfectly blending rural charm with modern comfort, Lakestone 8 offers an exclusive opportunity to secure your piece of paradise.**





Experience the mindful architecture of Scott Walkinshaw, capturing unique roof lines blending harmoniously with the environment. Enjoy stunning views of the natural pond and valley, designed to maximize your connection with nature.

The interior finishing was assembled by Wolsey Wall Interior Design. During the Pre-Sale period owners are able to select two color pallets thoughtfully named Sandscape Hideaway and Woodlands Retreat. These contrasting styles provide the options of dark and moody or spacious and bright.



With meticulous planning, the homes at Lakestone 8 are strategically positioned to offer stunning views of the park and natural pond.

The sensitive attention to natural grades influenced the design to include walk-out basements and cascading rooflines. These efforts allow these homes to blend seamlessly with the natural landscape to avoid overwhelming massing. Each home boasts its own individuality, creating a distinctive and appealing community.

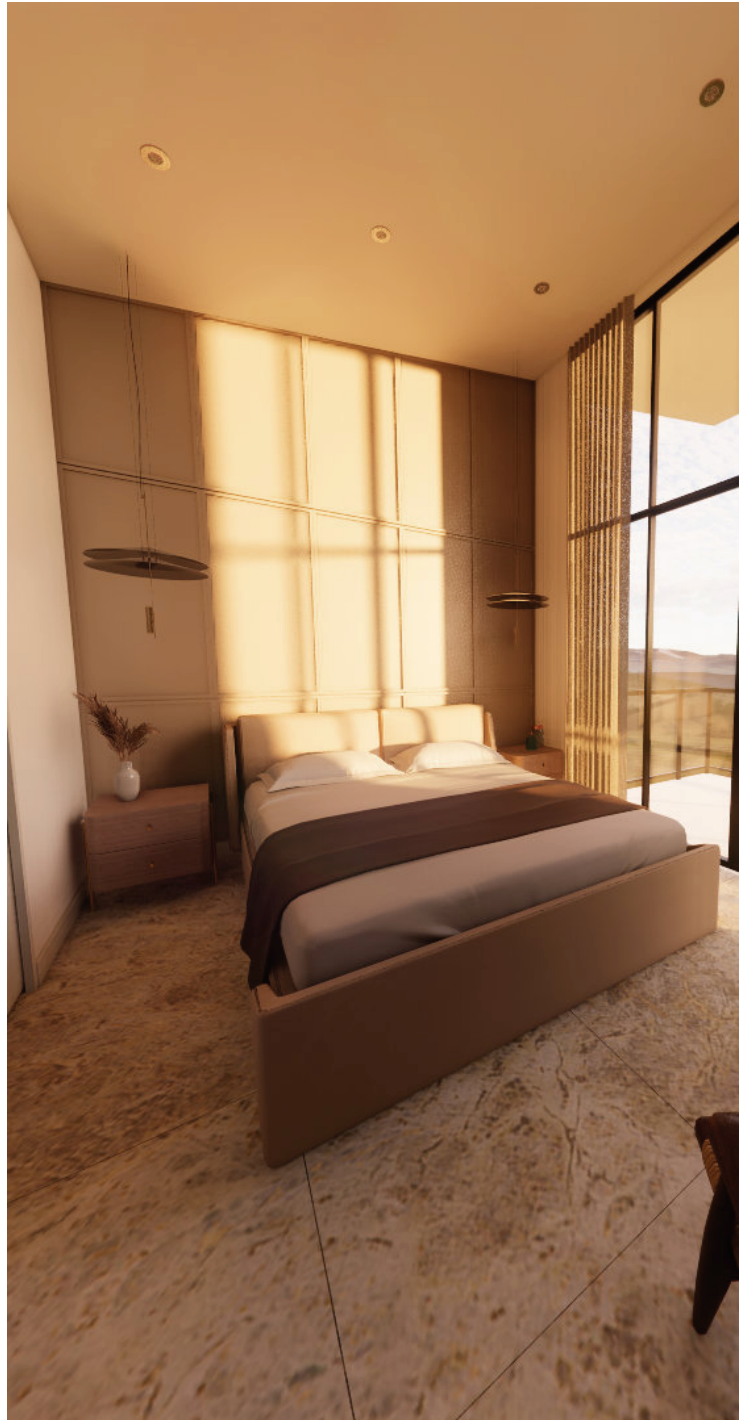


# Sandscape Hideaway

Spacious and bright.







**Brizo Hardware**

**Visual Comfort Lighting**

**Brizo Facets**

**Karastan Laminate**

**Godfrey Hirst Wool Carpet**

**KTL Ceramic - Tile**



# Woodland Retreat

## Dark and Moody



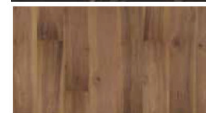
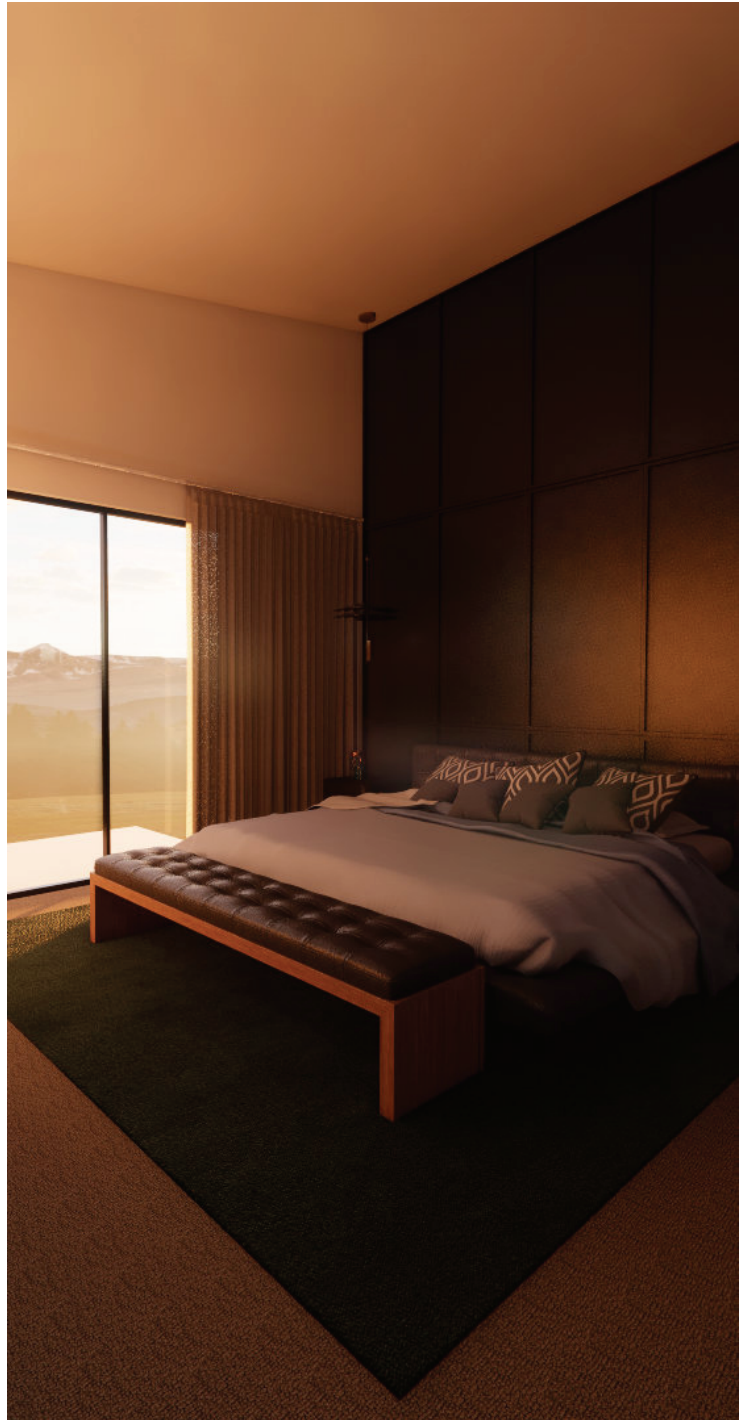


W  
WOLSEY WALL  
ARCHITECTURE & INTERIOR DESIGN



W



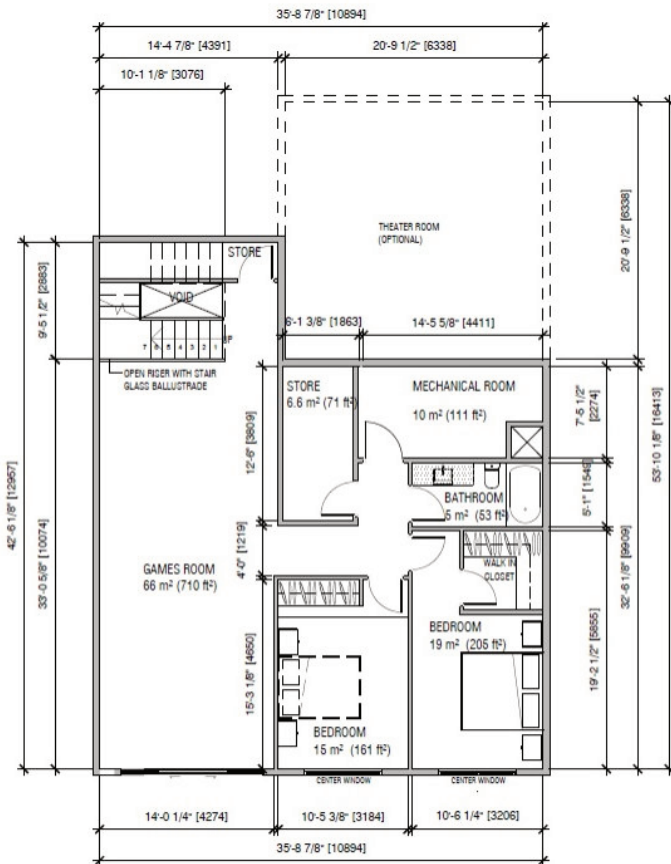


# Type A



## Walk-out Bungalow

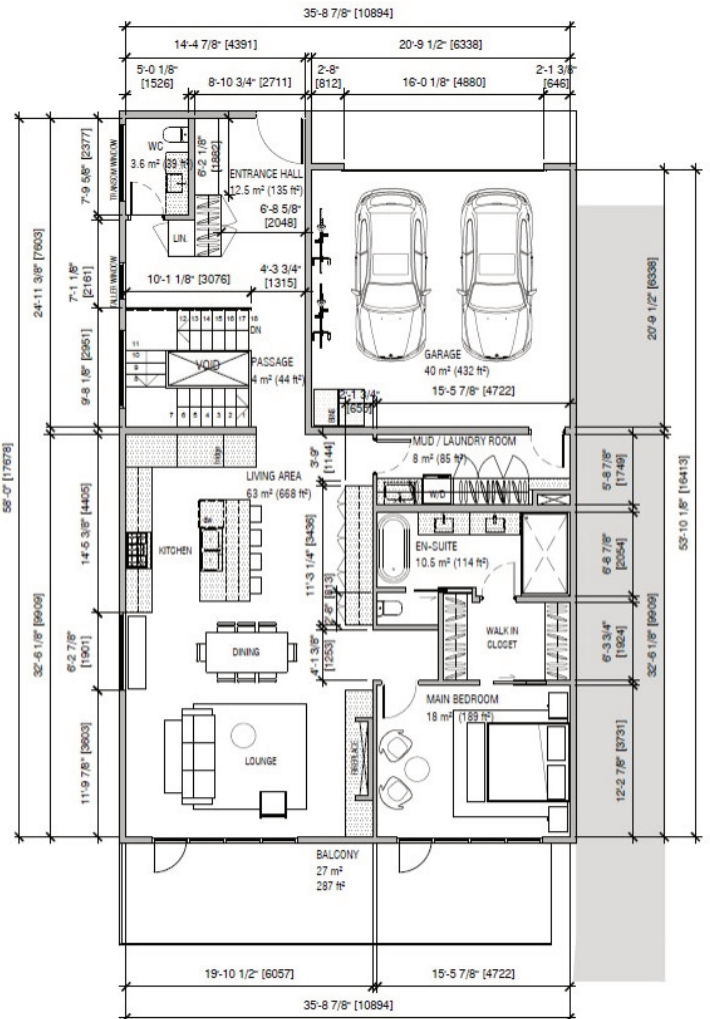
Living Area: 3,382 Square Feet



PLAN TYPE A - LEVEL 1

level 1 floor area 121m<sup>2</sup> (1304 ft<sup>2</sup>)

optional theater area 41m<sup>2</sup> (441 ft<sup>2</sup>)



PLAN TYPE A - LEVEL 2

level 2 floor area 133m<sup>2</sup> (1432 ft<sup>2</sup>)

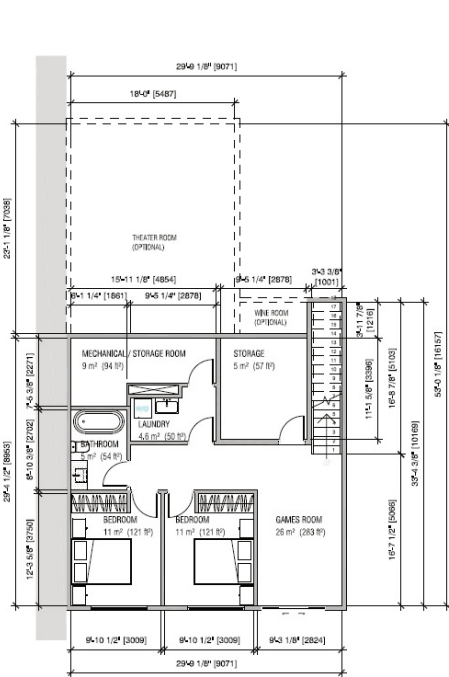
garage floor area 40m<sup>2</sup> (431 ft<sup>2</sup>)



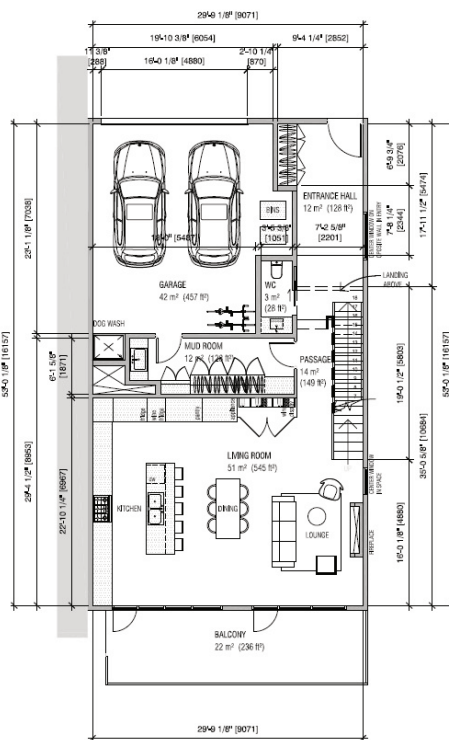
# Type B

## Two Story Walk Out

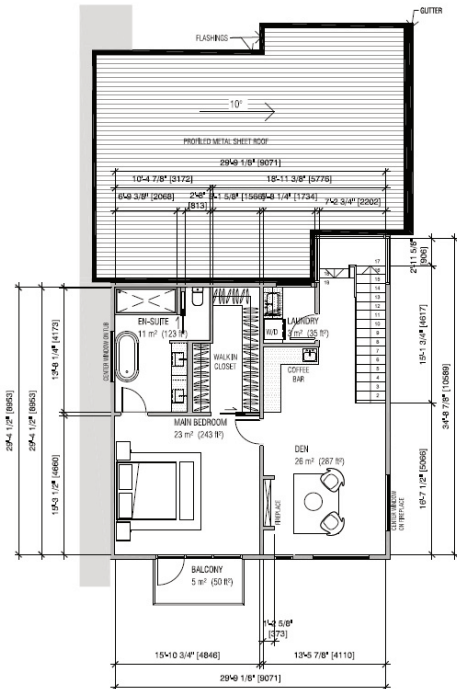
Living Area: 3,520 Square Feet



**PLAN TYPE B - LEVEL 1**  
 level 1 floor area 83m<sup>2</sup> (893 ft<sup>2</sup>)  
 optional theater wine room area 42m<sup>2</sup> (452 ft<sup>2</sup>)



**PLAN TYPE B - LEVEL 2**  
 level 2 floor area 96m<sup>2</sup> (1033 ft<sup>2</sup>)  
 garage area 43m<sup>2</sup> (463 ft<sup>2</sup>)



**PLAN TYPE B - LEVEL 3**  
 level 3 floor area 85m<sup>2</sup> (912 ft<sup>2</sup>)



# Key property highlights

Bedrooms	3
Bathrooms	2.5
Living Area	Type A: 3,382 sq ft. Type B: 3,520 sq ft.
Appliances	Fisher Paykel
Parking	2 Car plus Driveway
Exterior Maintenance	Strata



# Lakestone

## Amenities



### The Lake Club

- Fitness centre, Pools, Hot Tubs, Outdoor kitchen

### Waterside Park

- Swim dock, Boat dock access, Timber Pavilion

### Benchlands Park

- Pickleball, Tennis court, Basketball, Kids area

### Centre Club

- Fitness centre, Yoga, Swimming pool, Hot tubs

### Trail Network

A 28.8 km network of excellent hiking trails runs from the lake shore to Beacon Park, spanning a 300-metre elevation change. Views from the summit are panoramic. With Duck, Wood and Kalamalka lakes to the east, and Okanagan Lake to the north, west and south, these vistas are truly unparalleled in the Okanagan Valley.

Small parks situated throughout the trail system provide hikers with the opportunity to catch their breath while taking in the views. A series of trail head markers at specific entry points serve to orientate hikers so they can navigate specific routes throughout the site.



# Community Plan Trail Network







# CONTACT.

[info@lakestone8.ca](mailto:info@lakestone8.ca)

778-775-6026

5th Dimension  
Marketing